



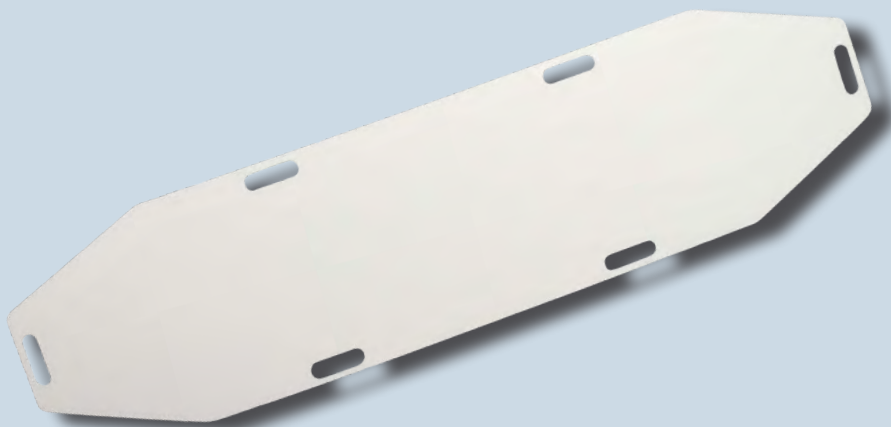
GREENWOOD PLASTICS INDUSTRIES

PATIENT TRANSFER BOARD

Patient transfers are quick and efficient with these body boards. Polyethylene construction makes these non-weight bearing boards durable and maintenance-free, but still lightweight.

Six handles provide grips exactly where you need them to more easily move in any direction. The smooth surface of the board is easy to slide and easy to clean. The thin profile makes stacking and storage simple.

ITEM NUMBER
GBODY-10-CA



800.798.4900
www.gpi-plastics.com

1126 N. Kimball Street
Danville, Illinois

MADE IN

THE USA

Patient Transfer Board

TECHNICAL SPECIFICATIONS



DIMENSIONS	GBODY-10-CA
Overall length	72.250"
Overall width	18.250"
Overall height	0.188"
Approx. weight	7 lbs. 8 oz.

Features and benefits

- Maintenance-free
- Crafted from durable, yet lightweight polyethylene
- Six handles give you grips exactly where you need them
- Move patients more easily in any direction

Options

- Smooth surface is easy to slide and easy to clean
- Easy to stack and store thanks to a thin profile
- Additional colors available



GREENWOOD PLASTICS INDUSTRIES

800.798.4900
www.gpi-plastics.com

1126 N. Kimball Street
Danville, Illinois

MADE IN

THE USA

Copyright © 2012 Greenwood Inc.



About GPI

Greenwood Plastics Industries is family-owned and operated. Located in central Illinois, GPI manufactures durable, lightweight products to fill the needs of a variety of industries, including airlines, retail, food distribution, healthcare and funeral service.